

# COLLIER

## #CE1351



SKU: CE1351

### Special Order Ship Finishes:



B700/10 LIGHT BLUE BASIC



B700/13 LIGHT GREY BASIC



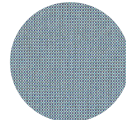
B700/32 WHITE BASIC



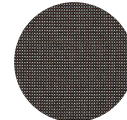
B700/34 DARK GREY BASIC



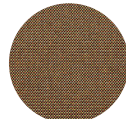
B700/4 ECRU BASIC



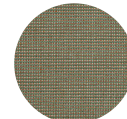
S900/02 SEA STANDARD



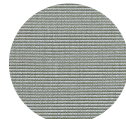
S900/05 BLACK STANDARD



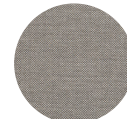
S900/07 CHESTNUT STANDARD



S900/08 SAND STANDARD



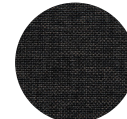
S900/09 SAGE STANDARD



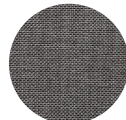
S900/18 NACRE STANDARD



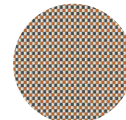
S900/71 WHITE STANDARD



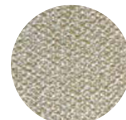
S900/75 EBONY STANDARD



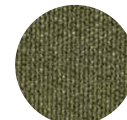
S900/77 GREY STANDARD



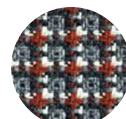
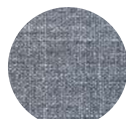
XC600/14 ORANGE BURNT EXCLUSIVE



XD600/40 GOLD EXCLUSIVE



XD600/42 GREEN EXCLUSIVE





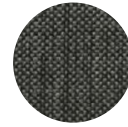
XD600/49 LIGHT BLUE EXCLUSIVE



XE600/31 BRICK RED EXCLUSIVE



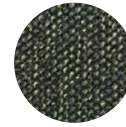
XE600/32 MERLOT EXCLUSIVE



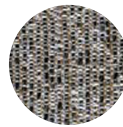
XE600/33 CLASSIC EXCLUSIVE



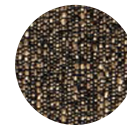
XE600/34 DENIM EXCLUSIVE



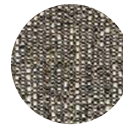
XE600/35 LAGOON EXCLUSIVE



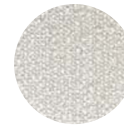
XE600/36 JOLLY EXCLUSIVE



XE600/37 BARK EXCLUSIVE



XE600/38 MUSLI EXCLUSIVE



XE600/39 SWAN EXCLUSIVE

**Description:** Outdoor/Indoor Back Cushion

**Designer:** EMU D&S Lab

**Manufacturer:** emu

### Dimensions

**Height:** 2.5"

**Width:** 19"

**Depth:** 19.5"

**Weight:** 1.5 lbs

### Shipping

**Master Pack Quantity:** 2

**Master Pack Height:** 18.5"

**Master Pack Width:** 18.5"

**Master Pack Depth:** 4.5"

**Master Pack Weight:** 2.5 lbs

**Master Pack Dimensions:** 19"x4"x19"

**Master Pack Density:** 2.8049671292 lbs/ft<sup>3</sup>

**Freight Class:** 250

**FOB:** PA 17042

**emuamericas, llc**

*Seating with Style™*

800.726.0368 | emuamericas.com