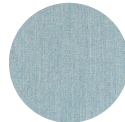


# COLLIER

## #CE1352

SKU: CE1352

### Special Order Ship Finishes:



B700/10 LIGHT BLUE BASIC



B700/13 LIGHT GREY BASIC



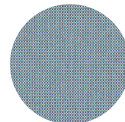
B700/32 WHITE BASIC



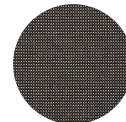
B700/34 DARK GREY BASIC



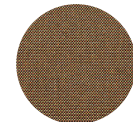
B700/4 ECRU BASIC



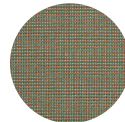
S900/02 SEA STANDARD



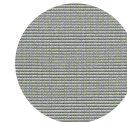
S900/05 BROWN



S900/07 CHESTNUT STANDARD



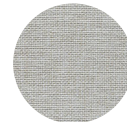
S900/08 SAND STANDARD



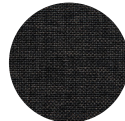
S900/09 SAGE STANDARD



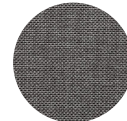
S900/18 NACRE STANDARD



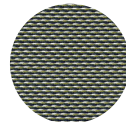
S900/71 WHITE STANDARD



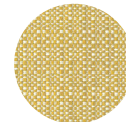
S900/75 EBONY STANDARD



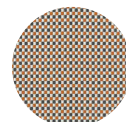
S900/77 GREY STANDARD



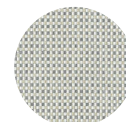
XB600/11 HONOLULU EXCLUSIVE



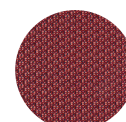
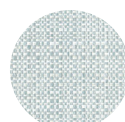
XC600/07 YELLOW EXCLUSIVE



XC600/14 ORANGE BURNT EXCLUSIVE



XC600/16 SILVER BIRCH EXCLUSIVE





XD600/40 GOLD EXCLUSIVE



XD600/41 BRONZE EXCLUSIVE



XD600/42 GREEN EXCLUSIVE



XD600/43 FRESH EXCLUSIVE



XD600/48 RED BLUE EXCLUSIVE



XD600/49 LIGHT BLUE EXCLUSIVE



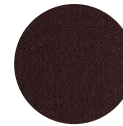
XD900/16 GREEN FAIRY EXCLUSIVE



XE600/31 BRICK RED EXCLUSIVE



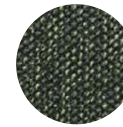
XE600/32 MERLOT EXCLUSIVE



XE600/32 MERLOT EXCLUSIVE



XE600/34 DENIM EXCLUSIVE



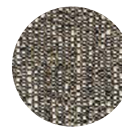
XE600/35 LAGOON EXCLUSIVE



XE600/36 JOLLY EXCLUSIVE



XE600/37 BARK EXCLUSIVE



XE600/38 MUSLI EXCLUSIVE



XE600/39 SWAN EXCLUSIVE

---

**Description:** Outdoor/Indoor Seat Cushion

**Designer:** EMU D&S Lab

**Manufacturer:** emu

## Dimensions

**Height:** 3"

**Width:** 28"

**Depth:** 22.5"

**Weight:** 2.5 lbs

## Shipping

**Master Pack Quantity:** 2

**Master Pack Height:** 18.5"

**Master Pack Width:** 18.5"

**Master Pack Depth:** 4.5"

**Master Pack Weight:** 2.5 lbs

**Master Pack Dimensions:** 19"x4"x19"

**Master Pack Density:** 2.8049671292 lbs/ft<sup>3</sup>

**Freight Class:** 250

**FOB:** PA 17042

---

**emuamericas, llc**

*Seating with Style™*

800.726.0368 | [emuamericas.com](http://emuamericas.com)