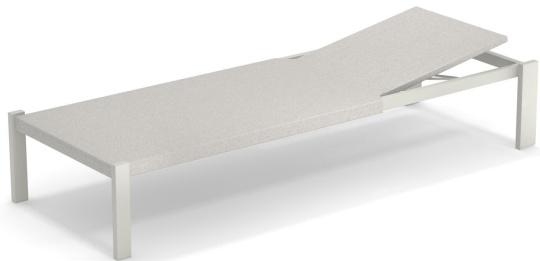


Shine #E295



SKU: E295

Special Order Ship Finishes:



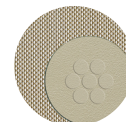
23 White + 300/52 White



24 Black + 300/95 Black



41 Bronze + 300/67 Mocha



71 Taupe + 300/86 Hazel

Description: Indoor/Outdoor Adjustable Chaise Lounge

*Advanced Collection

Designer: Arik Levy

Manufacturer: emu

Product Height: Lounge

Frame Material: Aluminum

Seat/Back Materials: Textilene Fabric

Stackability: 2

Dimensions

Height: 38"

Width: 30.5"

Depth: 82.5"

Seat Height: 14"

Weight: 47 lbs

Base Width: 0"

Shipping

Master Pack Quantity: 1

Master Pack Height: 14.5"

Master Pack Width: 83.5 "

Master Pack Depth: 31.5"

Master Pack Weight: 52 lbs

Master Pack Dimensions: 83.5"x31.5"x14.5"

Master Pack Density: 2.3560366951 lbs/ft³

Shipped on Cartons/Pallet: 5

Freight Class: 250

FOB: PA 17042

emuamericas, llc

Seating with Style™

800.726.0368 | emuamericas.com