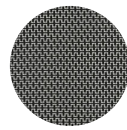


THROW PILLOW #CE701

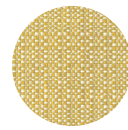


SKU: CE701

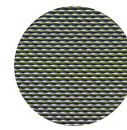
Special Order Ship Finishes:



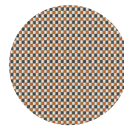
600/06 ICELAND



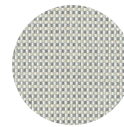
600/07 YELLOW



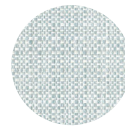
600/11 HONOLULU



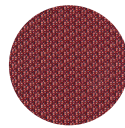
600/14 ORANGE BURNT



600/16 SILVER BIRCH



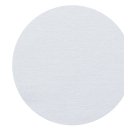
600/18 FRESH AIR



600/27 RASPBERRY



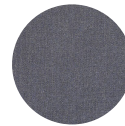
700/10 LIGHT BLUE



700/12 WHITE



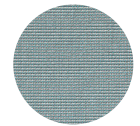
700/13 LIGHT GREY



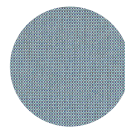
700/14 DARK GREY



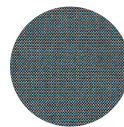
700/4 ECRU



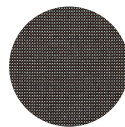
900/01 SKY



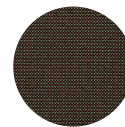
900/02 SEA



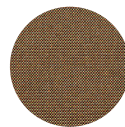
900/03 NIGHT



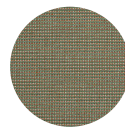
900/05 BLACK



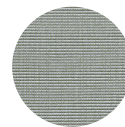
900/06 BRONZE



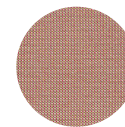
900/07 CHESTNUT



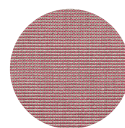
900/08 SAND



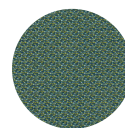
900/09 SAGE



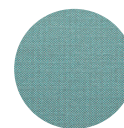
900/13 SALMON



900/14 CANDY



900/16 GREEN FAIRY



900/17 PETROLEUM



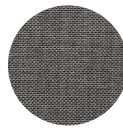
900/18 NACRE



900/71 SMALL WEFT WHITE



900/75 SMALL WEFT BROWN



900/77 SMALL WEFT GREY

Description: Outdoor/Indoor Cushion

Removable Cover Included, Available In
Emu Fabrics : Basic, Standard, Premium
A, B, C & D, ***Download Special Order
Fabric PDF [HERE](#)**

Designer: EMU D&S Lab

Manufacturer: emu

Dimensions

Height: 6"

Width: 15.5"

Depth: 15.5"

Weight: 1.5 lbs

Shipping

Master Pack Quantity: 1

Master Pack Height: 16"

Master Pack Width: 16"

Master Pack Depth: 7"

Master Pack Weight: 2.5 lbs

Master Pack Dimensions: 16"x7"x16"

Master Pack Density: 2.4107142858 lbs/ft³

Shipped on Cartons/Pallet: 20

Freight Class: 250

FOB: PA 17042

emuamericas, llc

Seating with Style™

800.726.0368 | emuamericas.com