

TWINS

#CE6052



SKU: CE6052

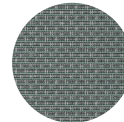
Special Order Ship Finishes:



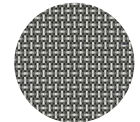
600/01 CORSICA



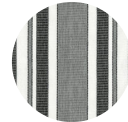
600/02 HEXAGON



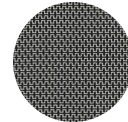
600/03 MALDIVES



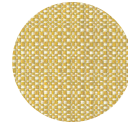
600/04 HYPNOSIS



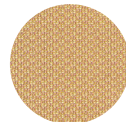
600/05 GREYSCALE



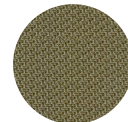
600/06 ICELAND



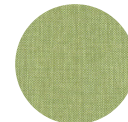
600/07 YELLOW



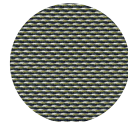
600/08 YELLOW NAPLES



600/09 KAKI



600/10 GREEN BAY



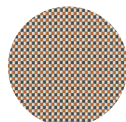
600/11 HONOLULU



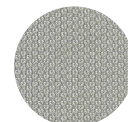
600/12 EMERALD



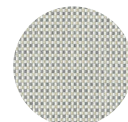
600/13 HARLEQUIN



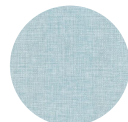
600/14 ORANGE BURNT



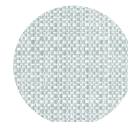
600/15 LIGHT NACRE



600/16 SILVER BIRCH



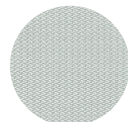
600/17 BABY BLUE



600/18 FRESH AIR



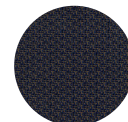
600/19 POLO STRIPES



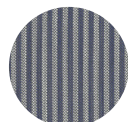
600/21 POWDER



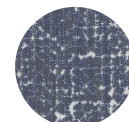
600/22 SEA FOAM



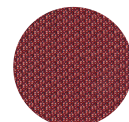
600/24 CROCHET BLUE



600/25 LAVENDER STRIPES

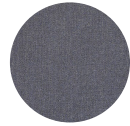


600/26 PERIWINKLE



600/27 RASPBERRY

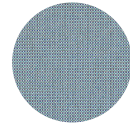




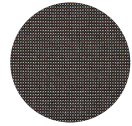
700/14 DARK GREY



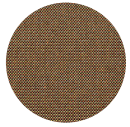
700/4 ECRU



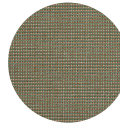
900/02 SEA



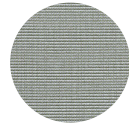
900/05 BLACK



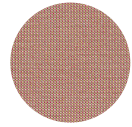
900/07 CHESTNUT



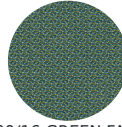
900/08 SAND



900/09 SAGE



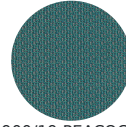
900/13 SALMON



900/16 GREEN FAIRY



900/18 NACRE



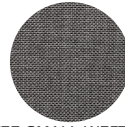
900/19 PEACOCK



900/71 SMALL WEFT WHITE



900/75 SMALL WEFT BROWN



900/77 SMALL WEFT GREY

Description: Outdoor/Indoor Seat & Back Cushion

Advanced Collection

Designer: Sebastian Herkner

Manufacturer: emu

Dimensions

Height: 2"

Width: 17-19.5"

Depth: 35"

Weight: 4.5 lbs

Shipping

Master Pack Quantity: 1

Master Pack Height: 23.5"

Master Pack Width: 35.5"

Master Pack Depth: 6"

Master Pack Weight: 6 lbs

Master Pack Dimensions: 47.5"x10"x25.5"

Master Pack Density: 2.0713215463 lbs/ft³

Freight Class: 250

FOB: PA 17042

emuamericas, llc

Seating with Style™

800.726.0368 | emuamericas.com