

# Twins

## #CE6053



SKU: CE6053

### Special Order Ship Finishes:



B700/10 LIGHT BLUE BASIC



B700/13 LIGHT GREY BASIC



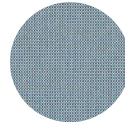
B700/32 WHITE BASIC



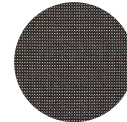
B700/34 DARK GREY BASIC



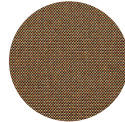
B700/4 ECRU BASIC



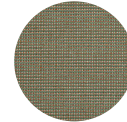
S900/02 SEA STANDARD



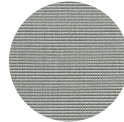
S900/05 BLACK STANDARD



S900/07 CHESTNUT STANDARD



S900/08 SAND STANDARD



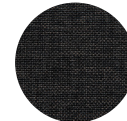
S900/09 SAGE STANDARD



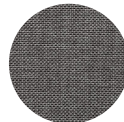
S900/18 NACRE STANDARD



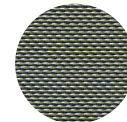
S900/71 WHITE STANDARD



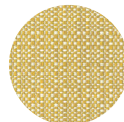
S900/75 EBONY STANDARD



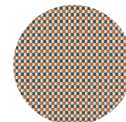
S900/77 GREY STANDARD



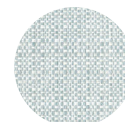
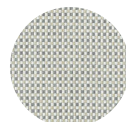
XB600/11 HONOLULU EXCLUSIVE

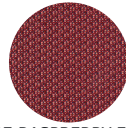


XC600/07 YELLOW EXCLUSIVE

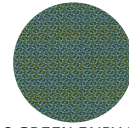


XC600/14 ORANGE BURNT EXCLUSIVE





XD600/27 RASPBERRY EXCLUSIVE



XD900/16 GREEN FAIRY EXCLUSIVE

---

**Description:** Outdoor/Indoor Seat & Back Cushion

Advanced Collection

**Designer:** Sebastian Herkner

**Manufacturer:** emu

## Dimensions

**Height:** Seat: 10", Back: 10"

**Width:** Seat: 19.5-24", Back: 19.5"-22"

**Depth:** Seat: 36.5", Back: 36.5"

**Weight:** 2.5 lbs

## Shipping

**Master Pack Quantity:** 2

**Master Pack Height:** 23.5"

**Master Pack Width:** 35.5"

**Master Pack Depth:** 6"

**Master Pack Weight:** 7 lbs

**Master Pack Dimensions:** 35"x6"x24"

**Master Pack Density:** 2.416541804 lbs/ft<sup>3</sup>

**Shipped on Cartons/Pallet:** 2

**Freight Class:** 250

**FOB:** PA 17042

---

**emuamericas, llc**

*Seating with Style™*

800.726.0368 | [emuamericas.com](http://emuamericas.com)